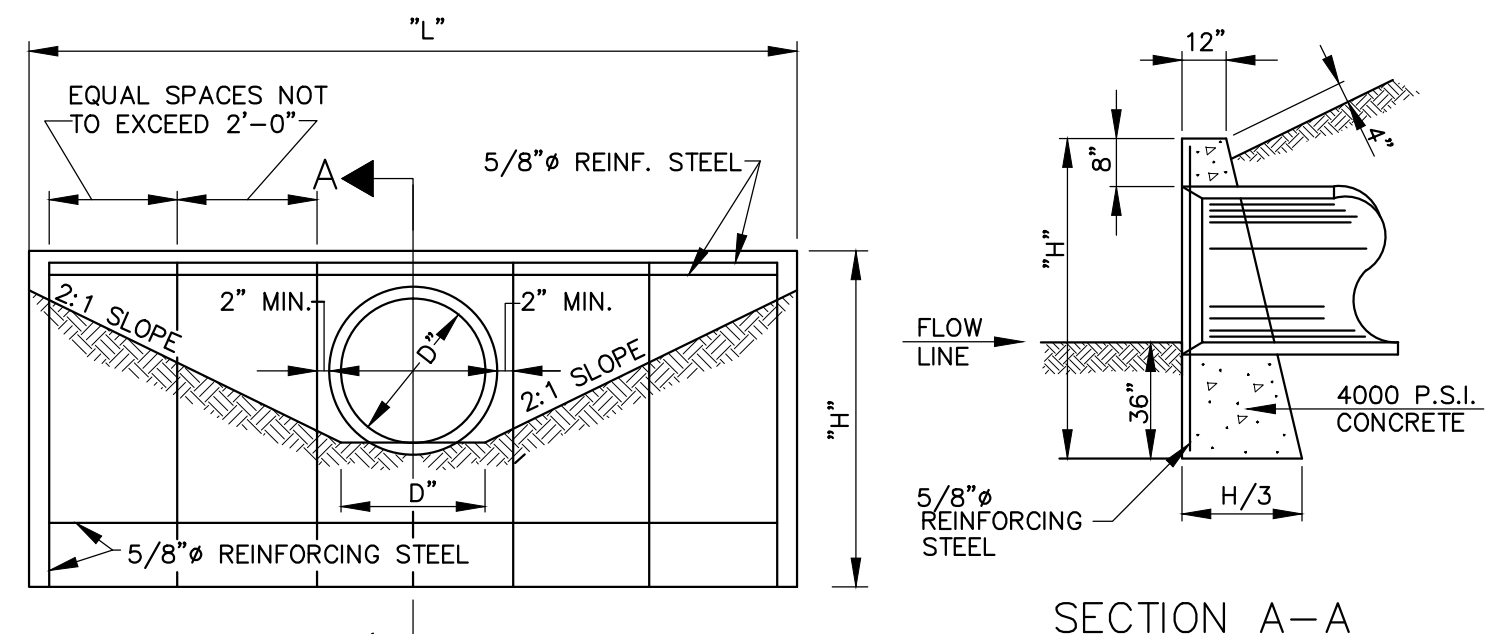


TYPE 'A' ECCENTRIC STORM SEWER MANHOLE
(24" I.D. AND LESS)



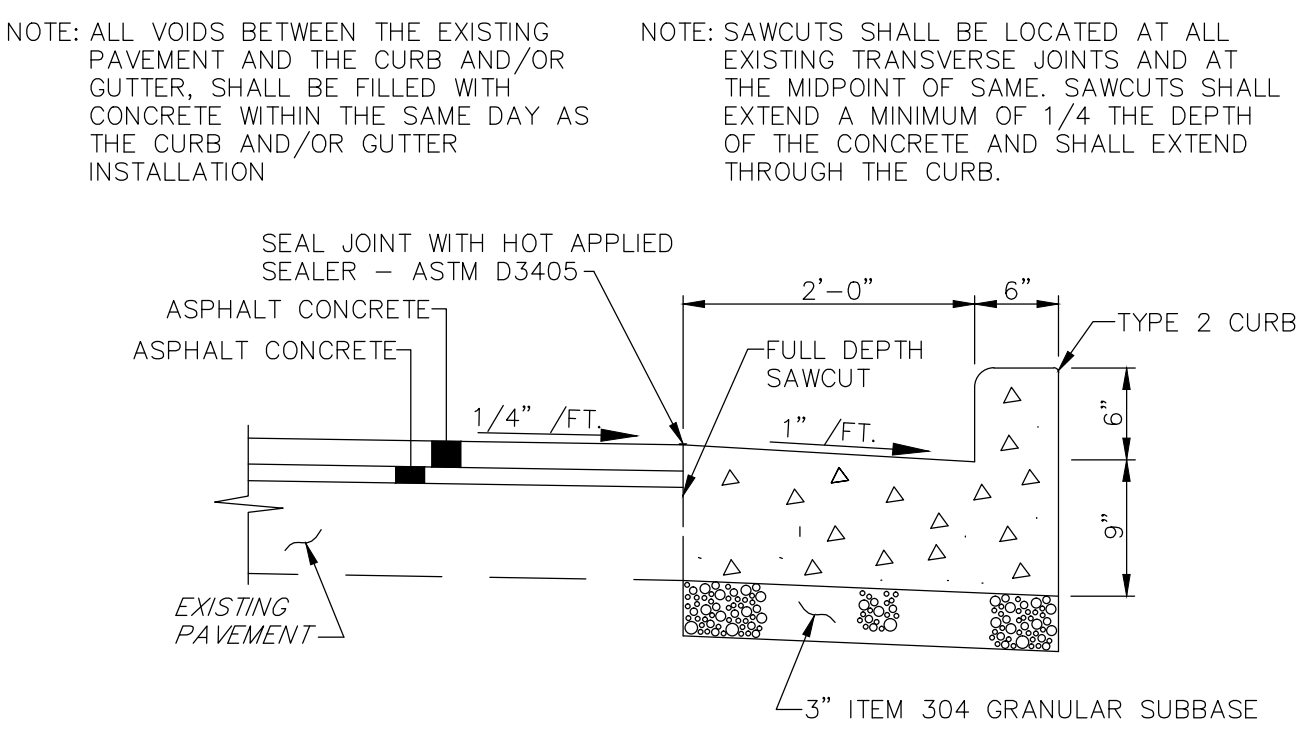
HW-1 HEADWALL DETAIL

CHAMFER ALL EXPOSED CORNERS 3/4" OF AN INCH.

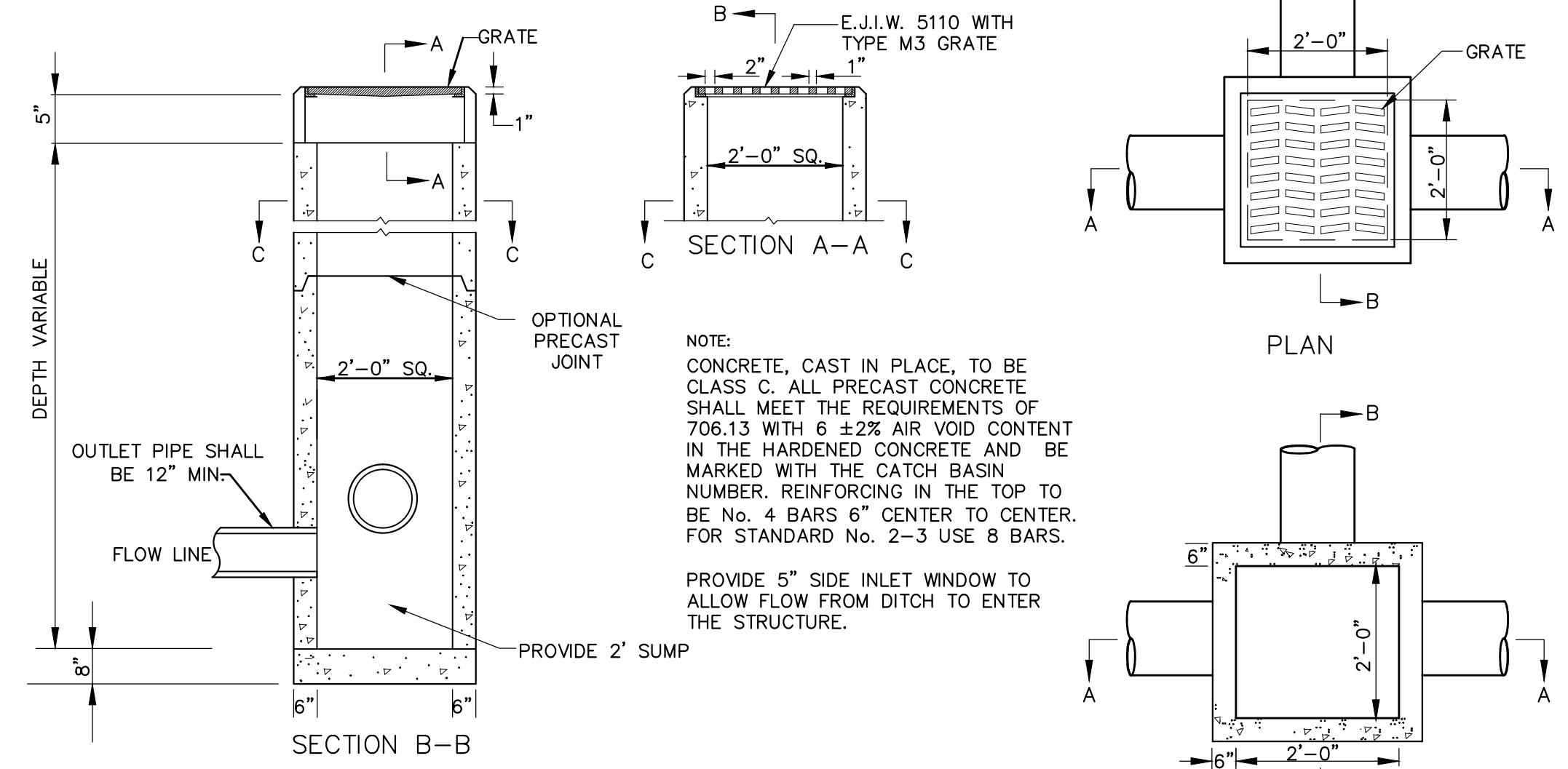
NOTE: WHERE SOIL BEARING CAPACITY IS LESS THAN 2600 P.S.F., INCREASE WIDTH OF BASE.

DIMENSIONS			QUANTITIES ONE HEADWALL	
DIAMETER	"H"	"L"	CONCRETE CU.YDS.	REINFORCING STEEL LBS.
24"	5'-11"	11'-0"	3.3	69

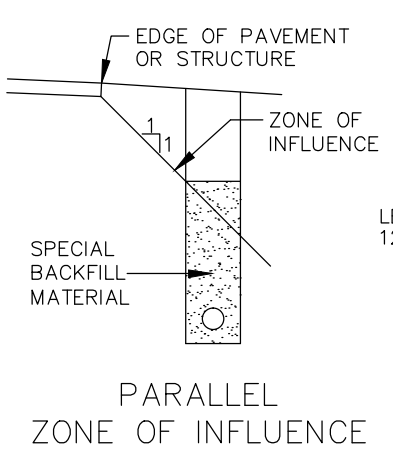
HW-1 HEADWALL DETAIL



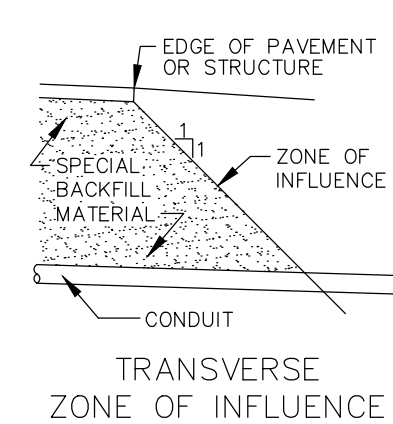
CURB AND GUTTER REPLACEMENT DETAIL



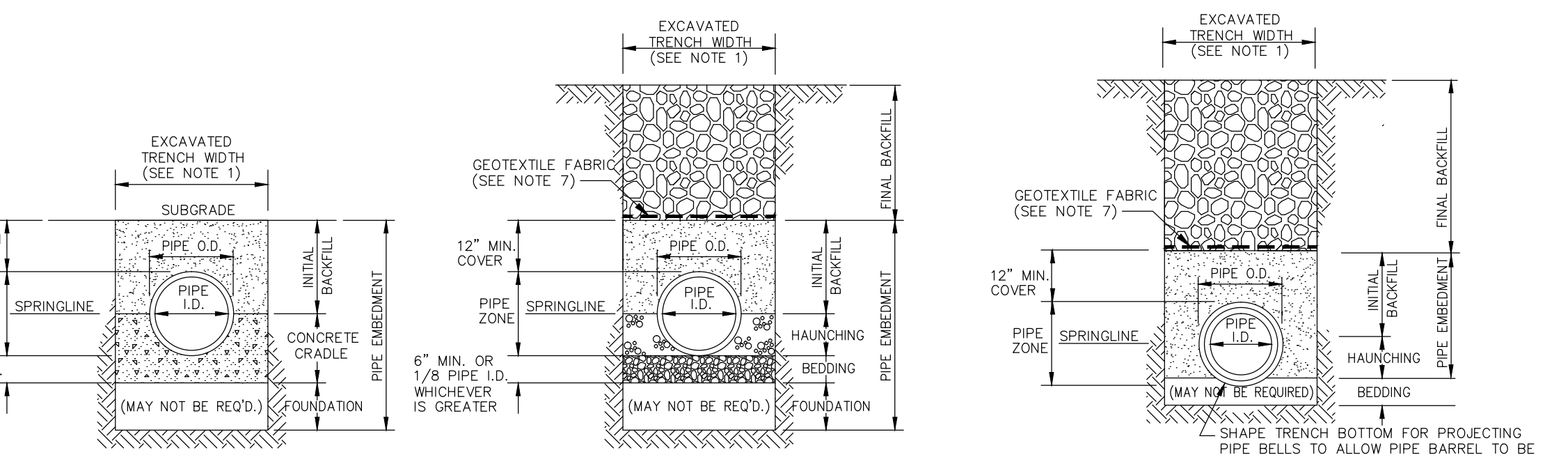
CATCH BASIN No. 2-2A



PARALLEL ZONE OF INFLUENCE



TRANSVERSE ZONE OF INFLUENCE

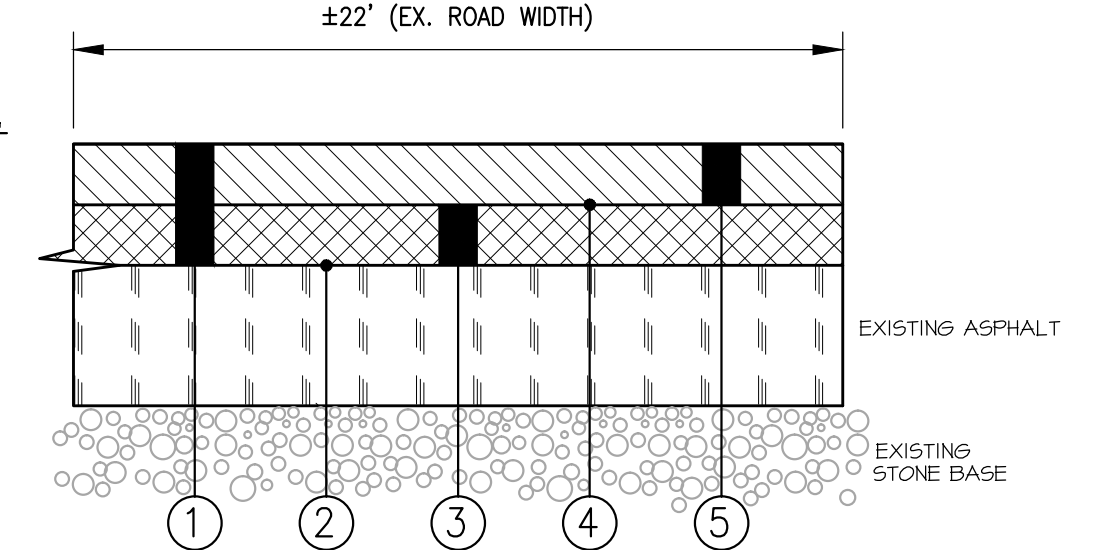


TRENCHING, EMBEDMENT AND BACKFILL DETAIL

NOTES:

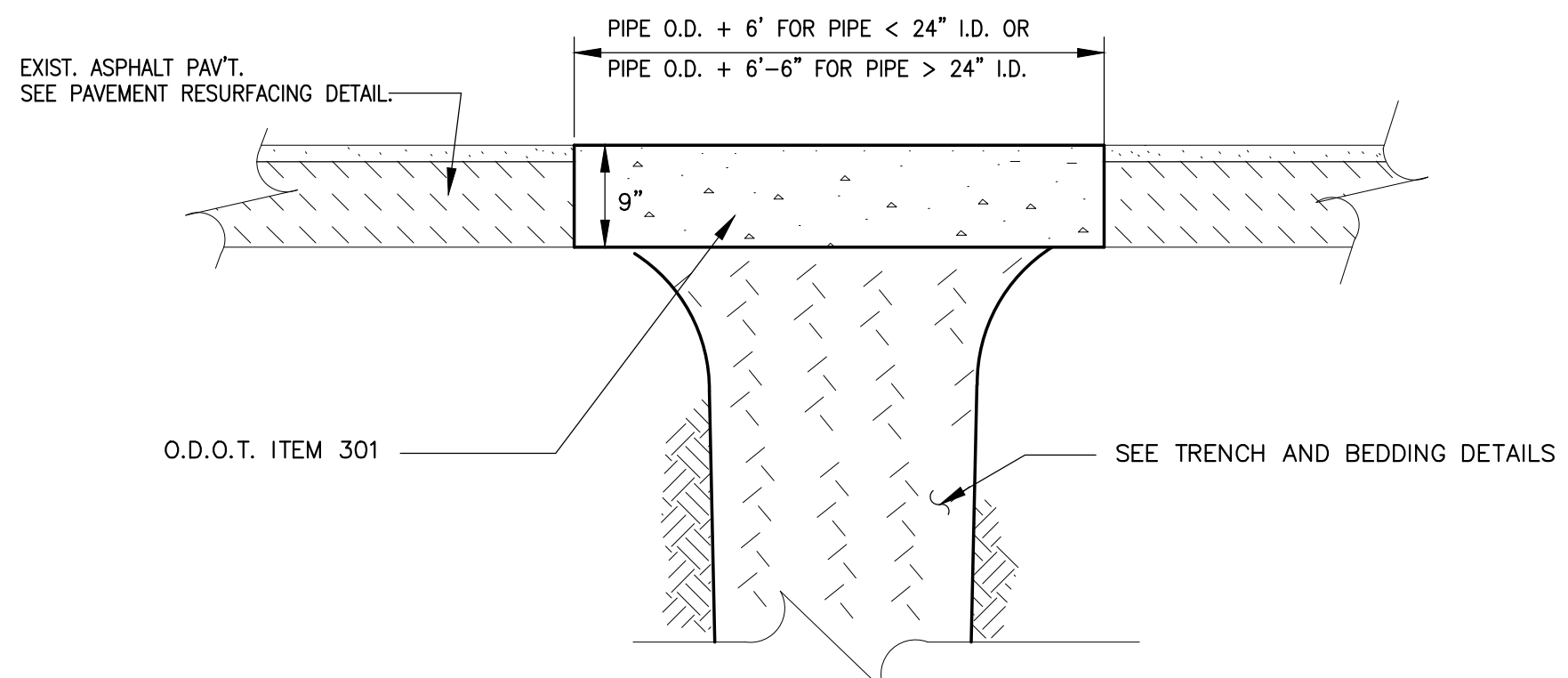
- MAXIMUM EXCAVATED TRENCH WIDTH: THE MAXIMUM EXCAVATED TRENCH WIDTH FROM THE BOTTOM OF THE TRENCH TO 12" OVER THE TOP OF THE PIPE (WITHIN PIPE EMBEDMENT) SHALL BE O.D. + 24" FOR ALL PIPES UP TO AND INCLUDING 24" I.D. + 30" FOR PIPE FROM 24" I.D. TO 54" I.D. AND O.D. + 48" FOR PIPES SIZES 60" I.D. AND OVER.
- FOUNDATION: WHERE AN UNSTABLE TRENCH BOTTOM CONDITION IS ENCOUNTERED, THE CONTRACTOR SHALL EXCAVATE TO A DEPTH REQUIRED BY THE ENGINEER AND REPLACE WITH MATERIAL AS DIRECTED BY THE ENGINEER.
- PIPE EMBEDMENT: CLASS A: CLASS A PIPE EMBEDMENT SHALL BE USED FOR ALL PIPING UNDER PAVEMENT OR STRUCTURES WITH LESS THAN 12 INCHES OF PIPE COVER TO THE SUBGRADE. THE CONCRETE CRADLE SHALL BE IN ACCORDANCE WITH ODOT ITEM 499, CLASS "C". THE INITIAL BACKFILL SHALL BE AASHTO NO. 57 OR NO. 67 GRANULAR PIPE EMBEDMENT. CLASS B: CLASS B PIPE EMBEDMENT SHALL BE USED FOR ALL PIPING UNLESS OTHERWISE NOTED ON THE PLANS OR AUTHORIZED BY THE ENGINEER. THE BEDDING AND HAUNCHING SHALL BE AASHTO NO. 57 OR NO. 67 GRANULAR PIPE EMBEDMENT. IN ALL AREAS UNDER PAVEMENT, STRUCTURES OR WITHIN THE ZONE OF INFLUENCE, THE INITIAL BACKFILL SHALL BE AASHTO NO. 57 OR NO. 67 STONE GRANULAR PIPE EMBEDMENT. IN ALL AREAS OUTSIDE OF PAVEMENT, STRUCTURES OR THE ZONE OF INFLUENCE, THE INITIAL BACKFILL SHALL BE SUITABLE ON-SITE MATERIAL APPROVED BY THE ENGINEER FOR ONLY REINFORCED CONCRETE PIPE AND DUCTILE IRON PIPE. THE INITIAL BACKFILL FOR ALL OTHER PIPES SHALL BE AASHTO NO. 57 OR NO. 67 GRANULAR PIPE EMBEDMENT. CLASS C: CLASS C PIPE EMBEDMENT SHALL ONLY BE USED FOR DUCTILE IRON WATER MAIN, DUCTILE IRON FORCE MAINS OR AS AUTHORIZED BY THE ENGINEER. THE PIPE EMBEDMENT SHALL BE AASHTO NO. 57 OR NO. 67 GRANULAR PIPE EMBEDMENT IN ALL AREAS UNDER PAVEMENT, STRUCTURES OR WITHIN THE ZONE OF INFLUENCE. THE PIPE EMBEDMENT SHALL BE SUITABLE ON-SITE MATERIAL APPROVED BY THE ENGINEER IN ALL AREAS OUTSIDE OF PAVEMENT, STRUCTURES OR THE ZONE OF INFLUENCE. WHERE ROCK OR SHALE IS ENCOUNTERED, A MINIMUM 6-INCHES OF AASHTO NO. 57 OR NO. 67 GRANULAR PIPE BEDDING OR SAND BEDDING SHALL BE PLACED AS DIRECTED BY THE ENGINEER.
- FINAL BACKFILL: IN ALL AREAS UNDER PAVEMENT, STRUCTURES OR WITHIN THE ZONE OF INFLUENCE THE FINAL BACKFILL SHALL BE SPECIAL BACKFILL MATERIAL. IN ALL AREAS OUTSIDE OF PAVEMENT, STRUCTURES OR THE ZONE OF INFLUENCE, THE FINAL BACKFILL SHALL BE SUITABLE ON-SITE MATERIAL APPROVED BY THE ENGINEER.
- SPECIFICATIONS: ALL TRENCHING, PIPE EMBEDMENT AND BACKFILL MATERIALS SHALL BE IN ACCORDANCE WITH SPECIFICATION 02300CT - EARTHWORK.
- CLAY TRENCH DAMS: CLAY TRENCH DAMS SHALL BE REQUIRED AS SHOWN ON PLANS OR WHEN AND WHERE NECESSARY AS DIRECTED BY THE ENGINEER.
- GEOTEXTILE FABRIC: INSTALL A GEOTEXTILE FABRIC IN ACCORDANCE WITH ODOT 712.09, TYPE A, AFTER ALL INITIAL BACKFILL CONSISTING OF AASHTO NO. 57 OR NO. 67 GRANULAR PIPE EMBEDMENT.
- DETECTOR TAPE: IF REQUIRED IN THE SPECIFICATIONS, INSTALL DETECTABLE WARNING TAPE ABOVE UTILITIES, 12" BELOW FINISHED GRADE, EXCEPT 6 INCHES BELOW SUBGRADE UNDER PAVEMENT AND SLABS.

TRENCHING, EMBEDMENT AND BACKFILL DETAIL

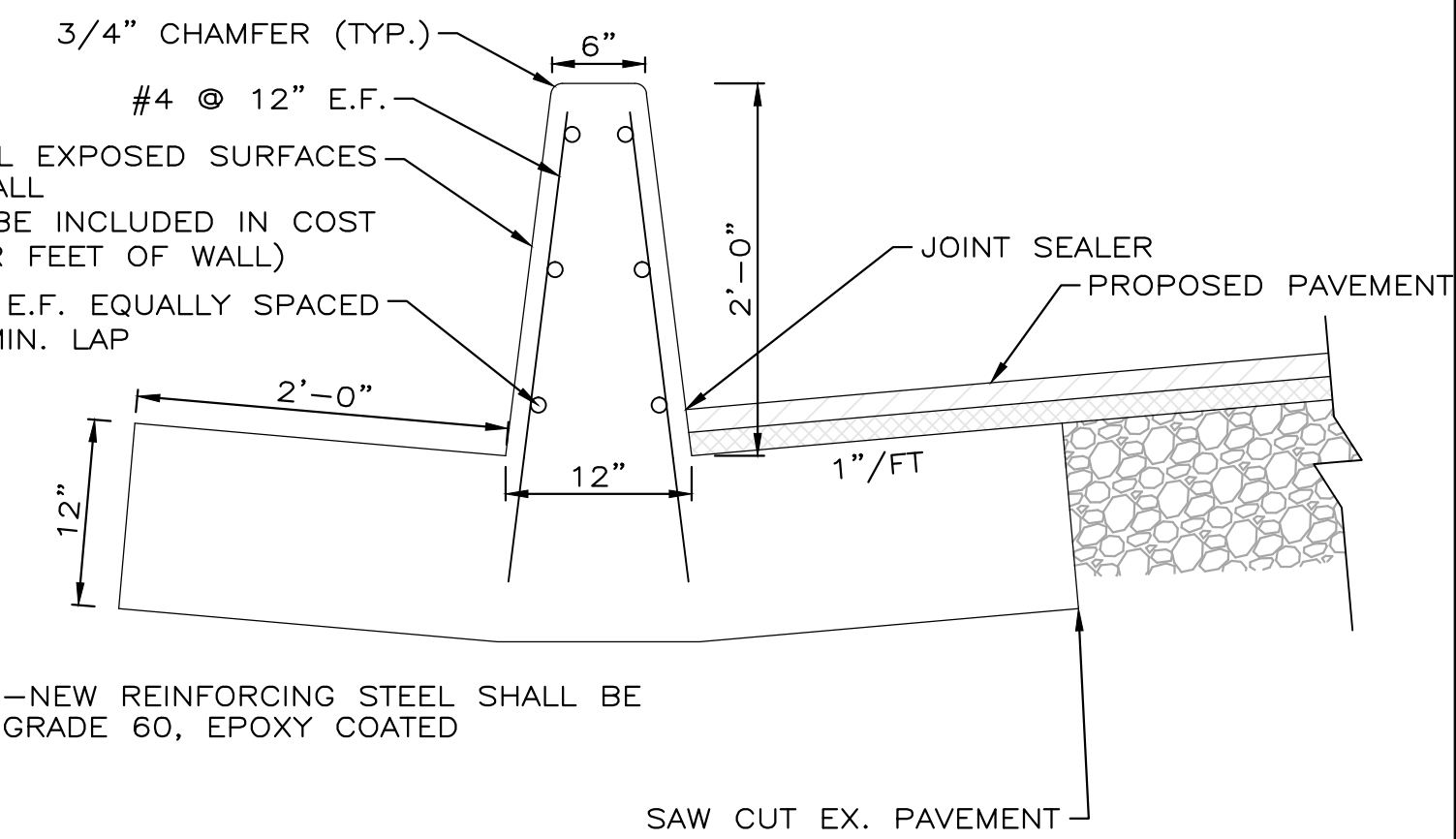


- 3" PAVEMENT PLANING
- ODOT ITEM 407 - TACK COAT (0.10 GAL/SY)
- 1.5" ODOT ITEM 448 - ASPHALT INTERMEDIATE COURSE, TYPE 2, PG64-22
- ODOT ITEM 407 - TACK COAT FOR INTERMEDIATE COURSE (0.04 GAL/SY)
- 1.5" ODOT ITEM 448 - ASPHALT SURFACE COURSE, TYPE 1, PG64-22

PAVEMENT RESURFACING DETAIL

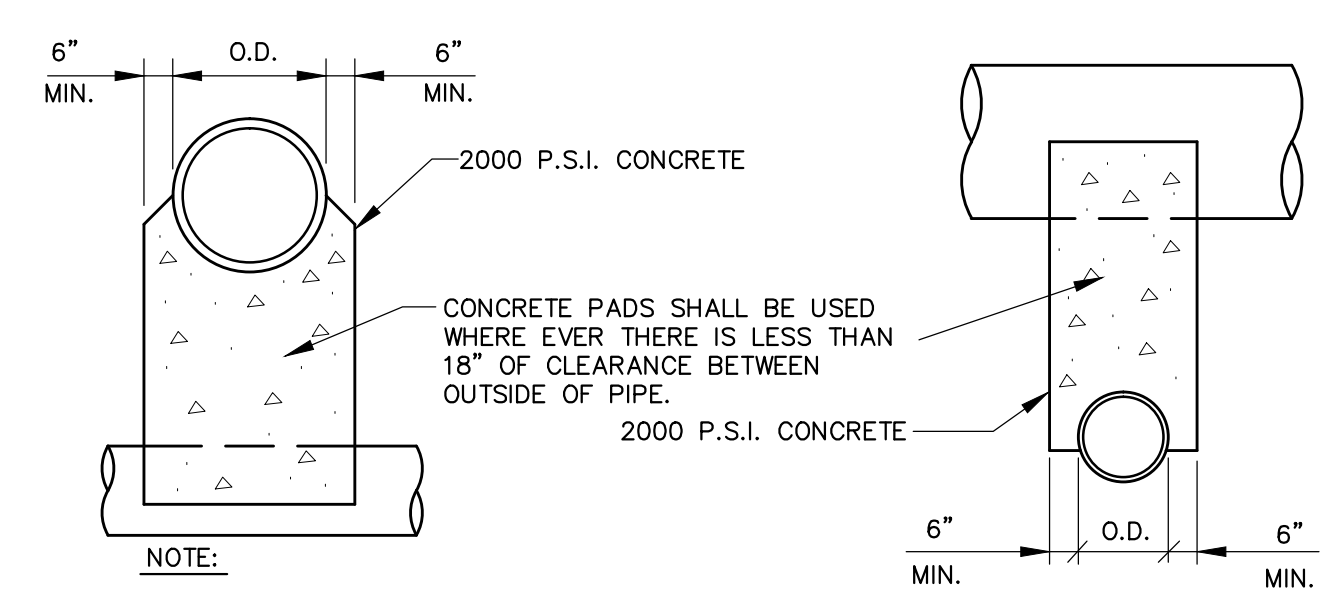


TRENCH REPAIR (MODIFIED)



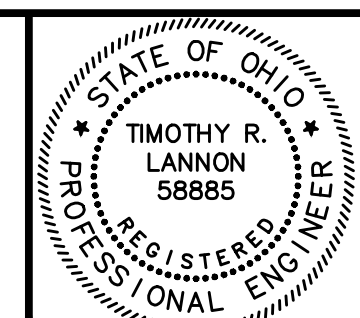
NEW REINFORCING STEEL SHALL BE GRADE 60, EPOXY COATED

MODIFIED CURB



UNLESS OTHERWISE DIRECTED BY THE ENGINEER, WHERE TWO PIPES (SEWER & WATER) CROSS EACH OTHER, A CONCRETE PAD AND CRADLE SEPARATOR SHALL BE PLACED BETWEEN THEM AS INDICATED ABOVE. WHERE PERMISSION IS GRANTED TO OMIT THE CONCRETE PADS, GRANULAR BACKFILL SHALL BE TAMPED IN 6" LAYERS AROUND BOTH PIPES. SUCH TAMPED BACKFILL SHALL BE CONTINUOUS FROM THE CRADLE OF THE LOWER PIPE TO THE TOP OF THE UPPER PIPE AND AT THE BOTTOM SHALL EXTEND IN BOTH DIRECTIONS, FOR THE FULL WIDTH OF THE TRENCH.

PIPE CROSSING DETAIL



NO	REVISION	DATE

WAITE HILL ROAD IMPROVEMENTS
VILLAGE OF WAITE HILL, OHIO

SCALE: AS SHOWN
DATE: JULY 2017
DESIGNED BY: JNS
DRAWN BY: JNS
CHECKED BY: TRL

DETAILS

PROJECT NO:	16001801
DRAWING NAME:	DET-1
SHEET:	10
OF:	11